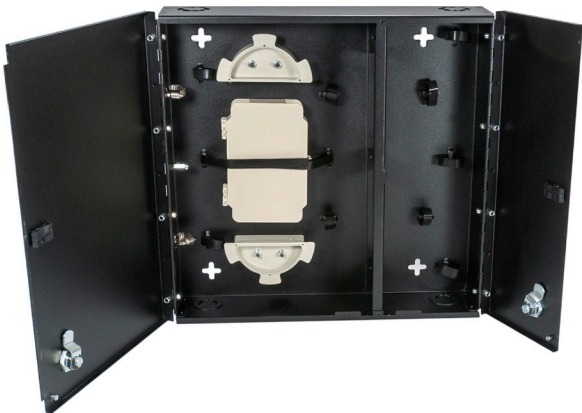


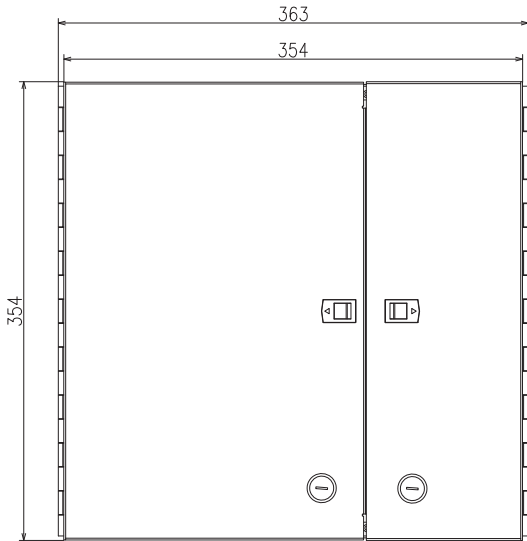
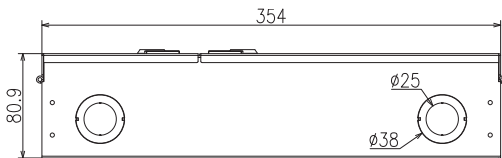
Cleerline SSF™ Wall Metal Enclosure units are designed to support patching and splicing in one unit. The enclosure has 4 adapter plates positions, allowing for a wide variety of fiber termination connector types. Two compartments separate the network terminations from the distribution terminations, and the unit has a double outer door with key lock.

FEATURES AND BENEFITS

- Accommodates up to 4 Cleerline™ adapter plates
- LGX-118 compatible adapter plates or MPO cassettes
- Cable entry tie down points
- Double door with key lock
- Top or bottom cable entry
- Compliant with NEMA-2 Standards



Enclosures are sold empty



SPECIFICATIONS	
Adapter Capacity	4
Splice Trays	2
Dimensions	13.8" H x 14" W x 3.2" D in
Packaging	16" H x 16" W x 5" D in
Weight	7.3 lbs empty
Material	Aluminum, black powder coat
Compatible with	Cleerline™ and LGX-118 adapter plates

PART NUMBER	DESCRIPTION
SSF-MWM-SPLIT-WL-E4	Medium, empty wall mount with split metal door, with one lock/key. Fits 4 LGX adapter plates.